

Municipal Water Management

Kansas Water Congress

Garden City, Kansas

July 27, 2017



2 Biggest Issues Facing Water Utilities

- Aging Infrastructure
- Water Quality and Availability

Water Use Snapshot



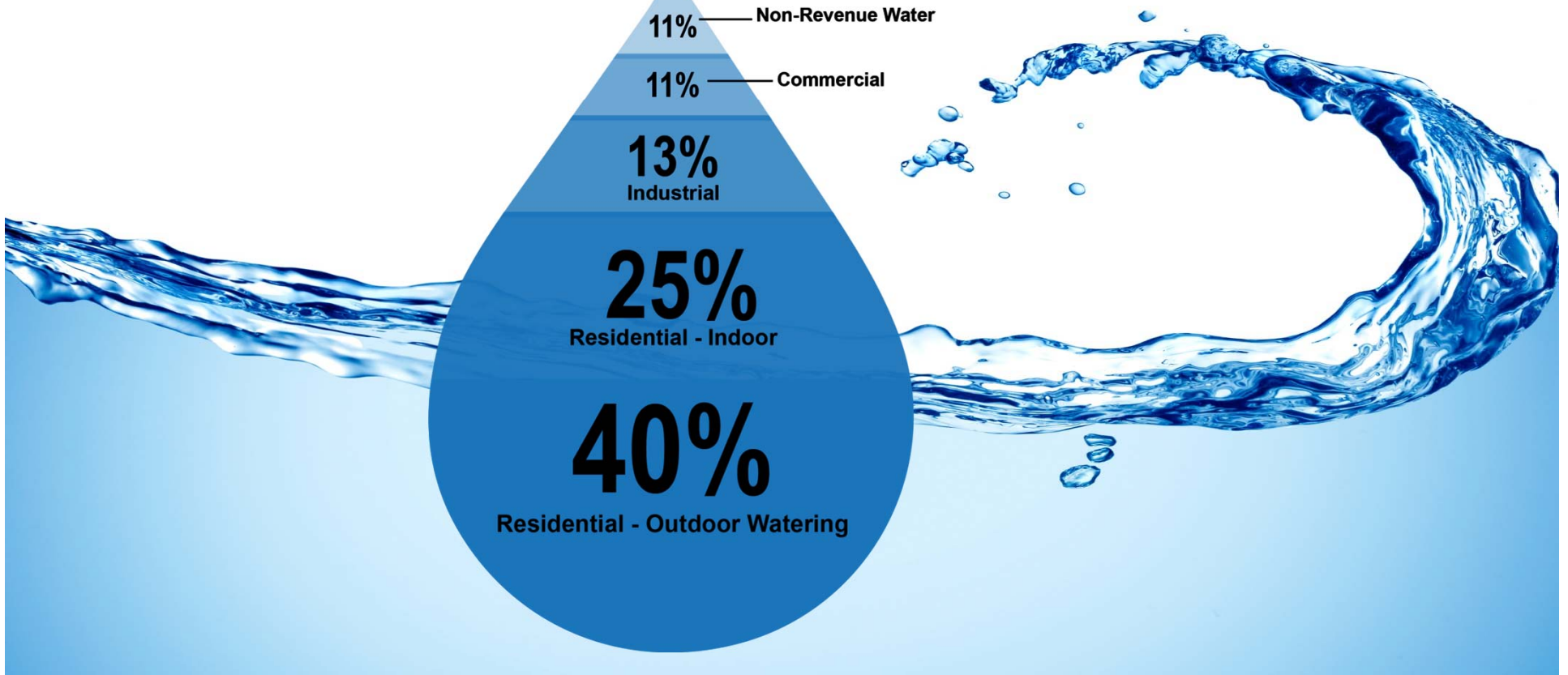
11% — Non-Revenue Water

11% — Commercial

13%
Industrial

25%
Residential - Indoor

40%
Residential - Outdoor Watering

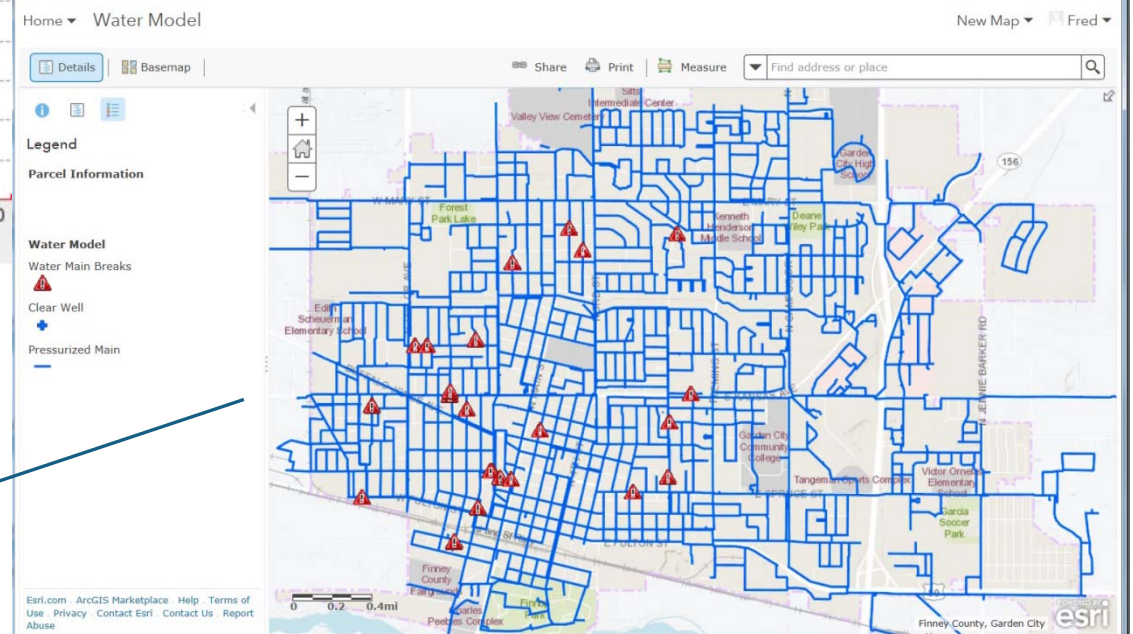


City Resources



AMI: Automated Metering Infrastructure:
Every water meter is read electronically every hour.

GIS: Geographic Information System
Infrastructure Location,
Structure Dimensions,
Property Information



Customer Water Use Reports

Water Report
January 1, 2016



How Does Your Household Compare?
Here's how your household compares to similar households like yours.

Your Household

Similar Households

* Similar Households based on lot size

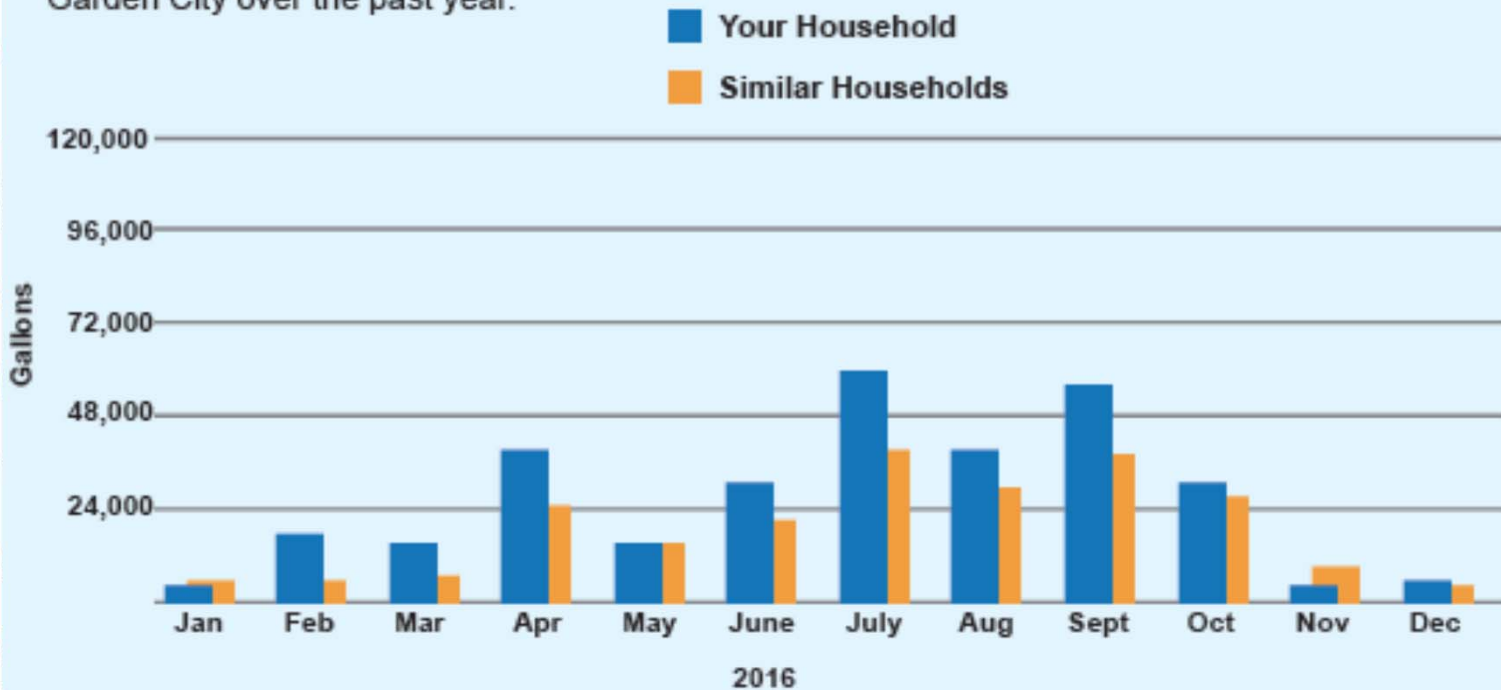


Install a Water-Saving Faucet

When you screw a water-saving faucet onto a faucet, it will reduce the amount of water you use. You'll use less water anytime the faucet is on, and you'll hardly notice the difference.

Water Usage Over Time

Your average daily water usage compared to similar households in Garden City over the past year.



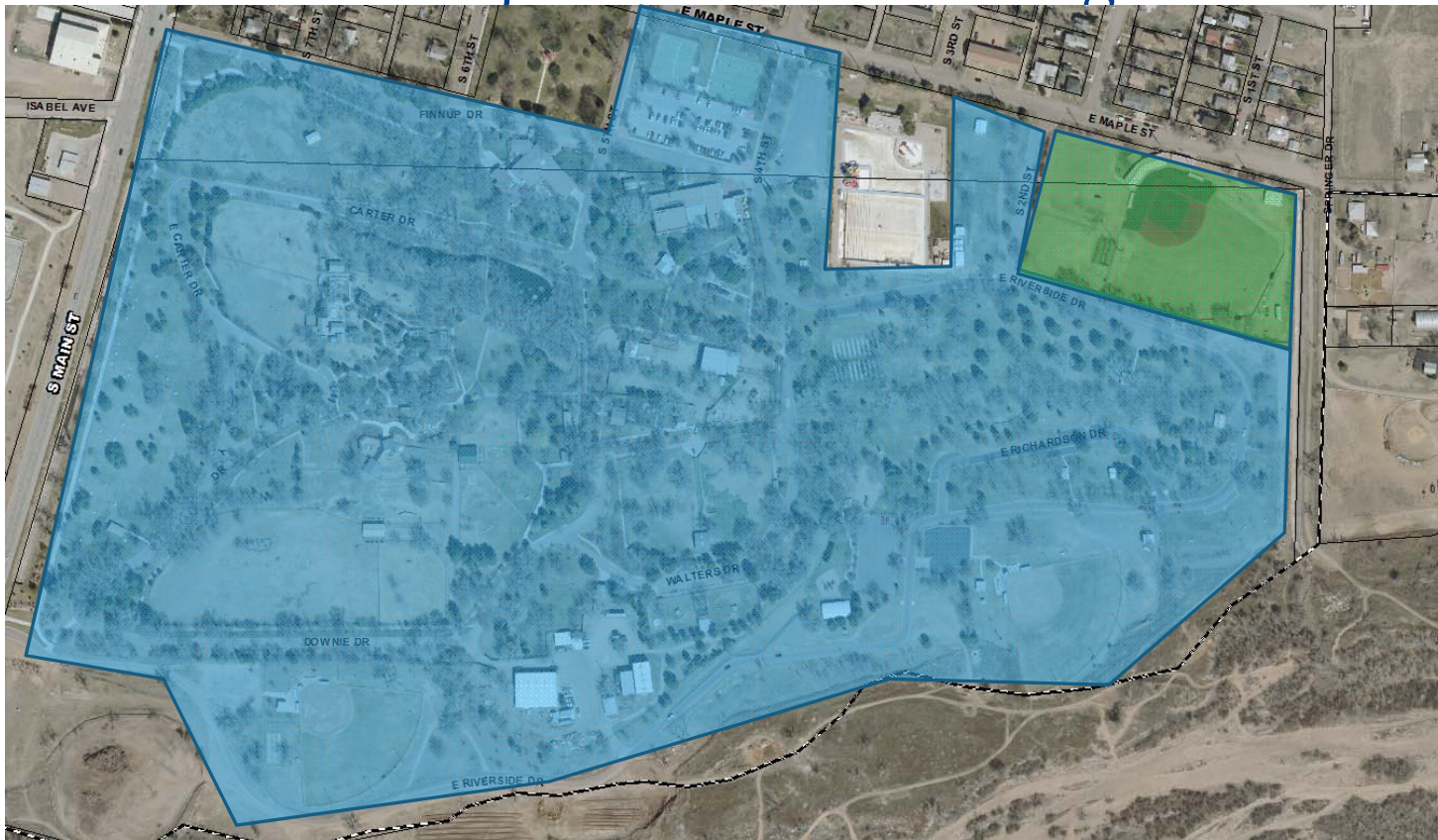
* Similar Households based on lot size

Was this information helpful? Please take our online survey at:
www.surveymonkey.com/GCwaterreport



Bureau of Reclamation Projects

- Field Services Project – Sub-Surface Irrigation Pilot



Comments / Questions

Chris Law, City Commissioner

Fred Jones, Water Resource Manager

