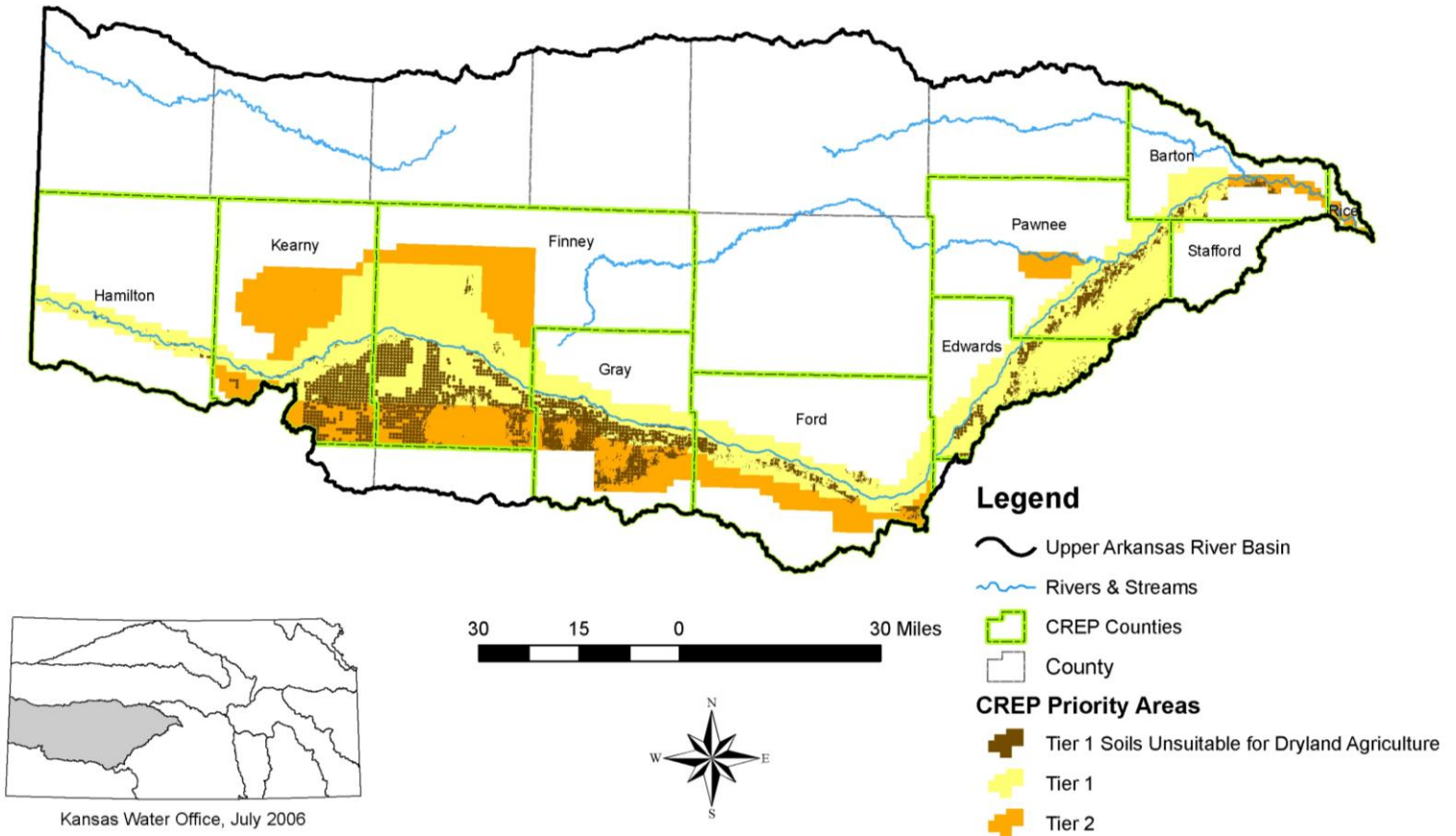


Arkansas River

Conservation Reserve Enhancement Program
(CREP)

Status Update
for the
Kansas Water Congress
July 31, 2008

Upper Arkansas River Conservation Reserve Enhancement Program (CREP)



- Primary goal is to reduce groundwater use by 29,750 acre-feet annually through the permanent retirement of irrigation water rights. CREP provides conservation benefits to water quality, wildlife, soils, and energy.
- Presently operating under a limited 20,000 acre program by an MOA approved by FSA. (17,000 irrigated acres – 3,000 dryland acres).
- 2008 Kansas Legislature re-authorized CREP until June 30, 2009 not to exceed \$2 Million for a total of 40,000 acres which can be enrolled during FY07,08,& 09.
- FSA pays “Irrigated Rental Rates” FSA at \$90 - \$105 / acre for flood; \$100 - \$115 / acre for center pivot for 14 - 15 year life of the CRP contract.
- SCC pays a sign-up Incentive Payment of \$35 / acre for Tier 2 soils; \$62 / acre for Tier 1 soils.

FUTURE ENROLLMENT LIMITATIONS

- Each county enrollment limited to 25% of total CREP - 5,000 acres
- Total CREP enrollment limited to $\frac{1}{2}$ the number of acres expiring from CRP in the affected counties in the **prior** year
 - '06 expired acres = 4,292
 - '07 expired acres = 45,941
 - '08 expired acres = 7,268
 - '09 expired acres = 51,030
 - TOTAL = 108,531** $\frac{1}{2} = 54,265.5$

Current Enrollment Summary

- **State Incentive Payments totaling \$100,812.62 have been issued on 13 finalized CREP offers representing 1627.6 acres and 3434 acre-feet (approximately \$2.9 M in Total FSA payments).**
- **49 Offers on tracts totaling 7774.2 acres are still awaiting final processing / recommendations for CRP-1 approval pending water right division agreements, return of documents, etc.**
- **Offers on 23 tracts totaling 4,670.4 acres have been withdrawn for various reasons including land sales, changes of tenants / operators, program disqualification, uncertainty about commodity prices, and others (unexplained). [The highest enrollment total during FY07-08 (so far) was 63 offers on about 13,295 acres in January, 2008.]**

Current Enrollment Totals

- **CREP County Totals as of July 30, 2008**

<u>COUNTY</u>	<u>TOTAL ACRES</u>
• Finney	784.7
• Gray	3540.1
• Kearny	4835.3
• Pawnee	241.7
• Program Totals to Date	9.401.8

QUESTIONS?

**For more information about the UAR CREP,
contact the Kansas State CREP Coordinator:**

- **Steven K. Frost, WCP Manager
State Conservation Commission
109 SW 9th Street, Suite 500
Topeka, Kansas 66612-1299
Phone: (785) 296-8964
Fax: (785) 296-6172
Web: www.scc.ks.gov**